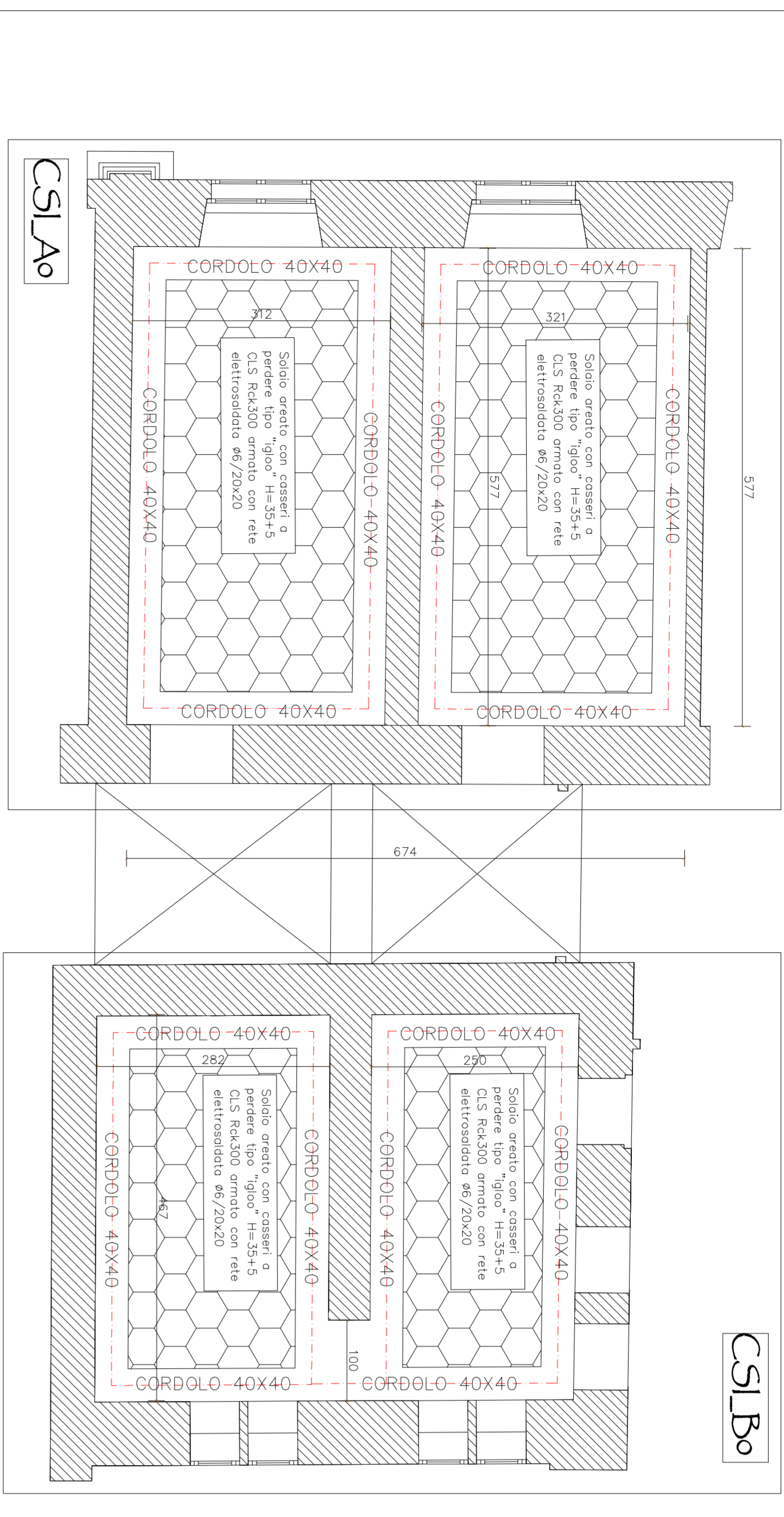
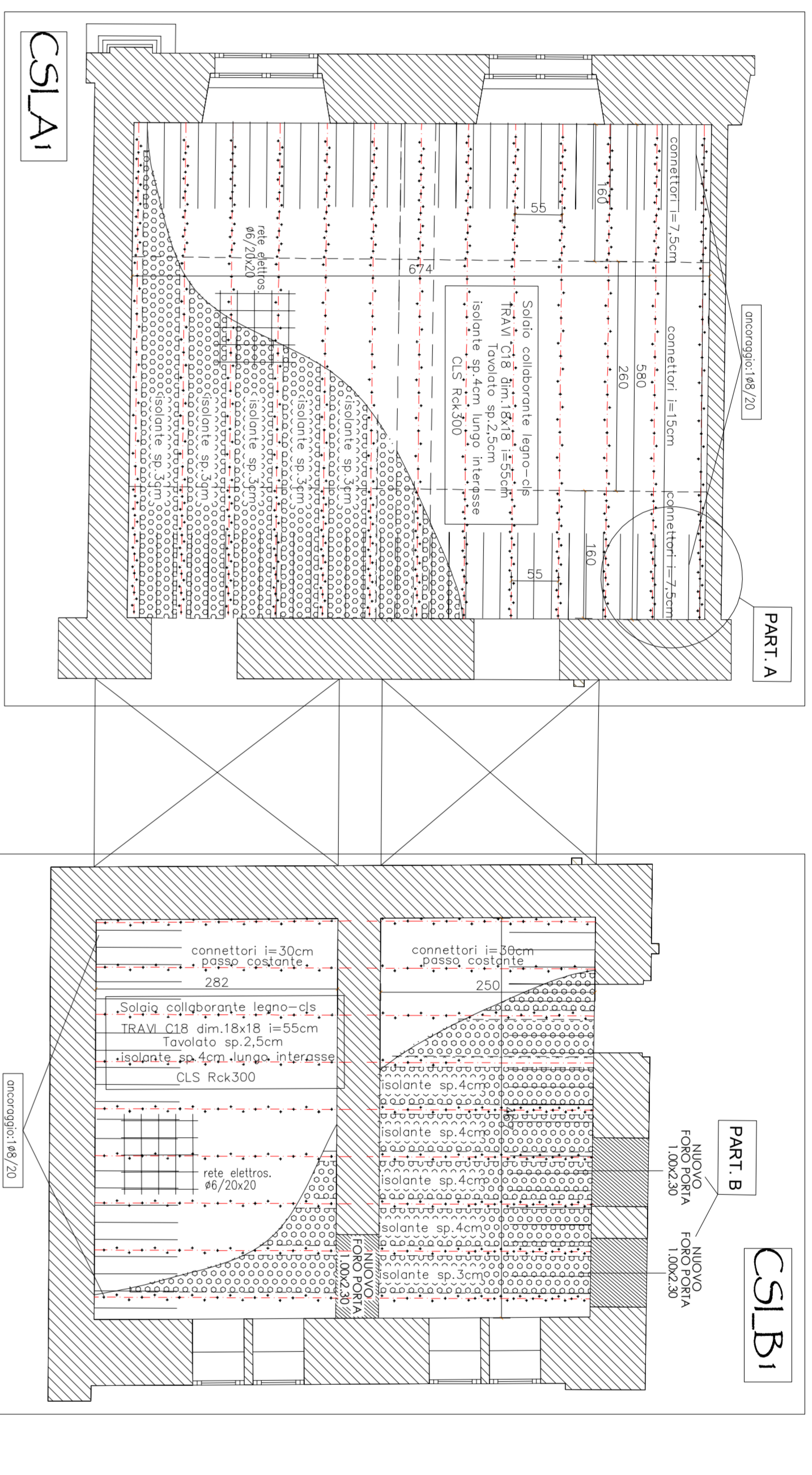


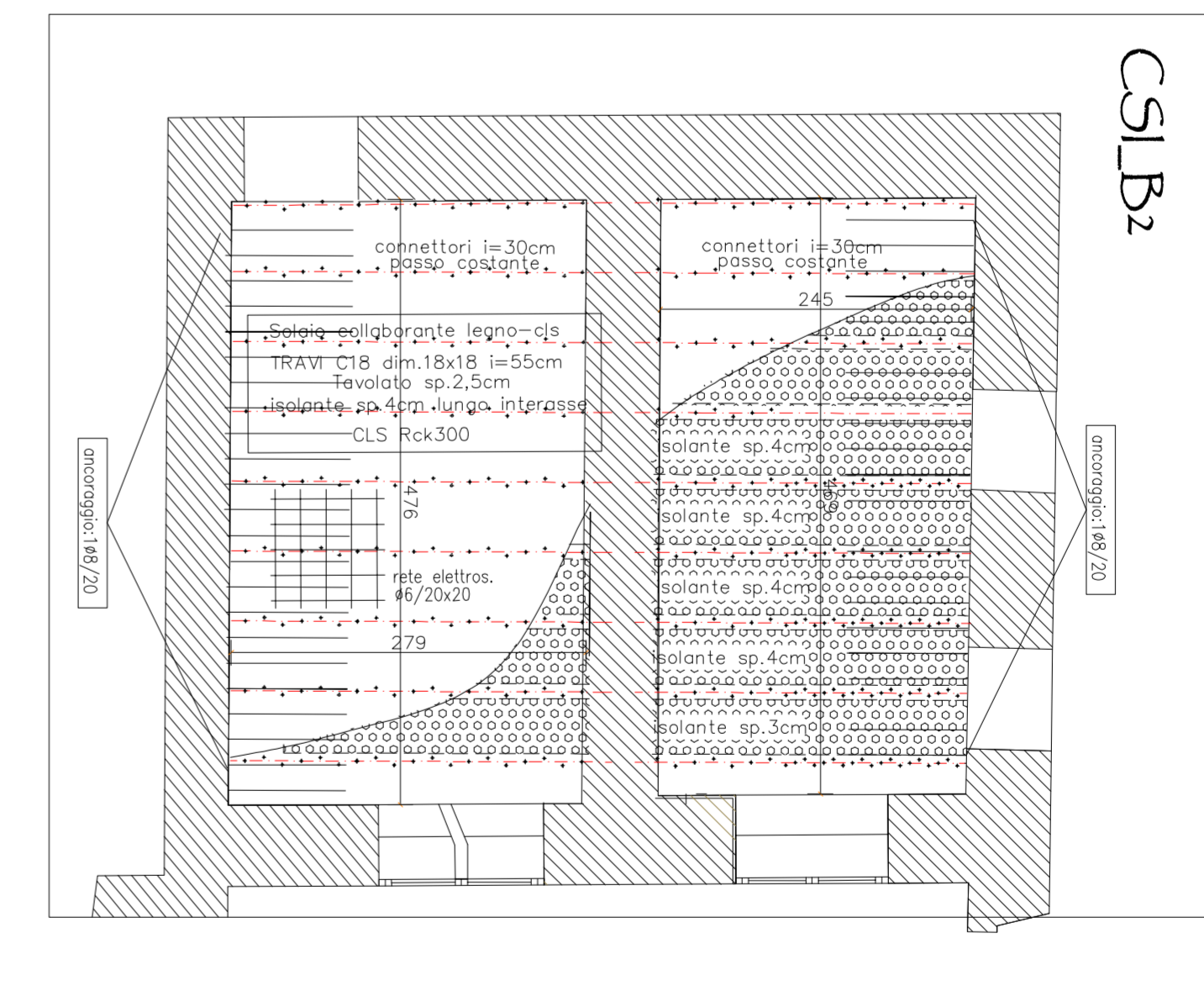
blocco servizi igienici A0-B0_PIANOTERRA



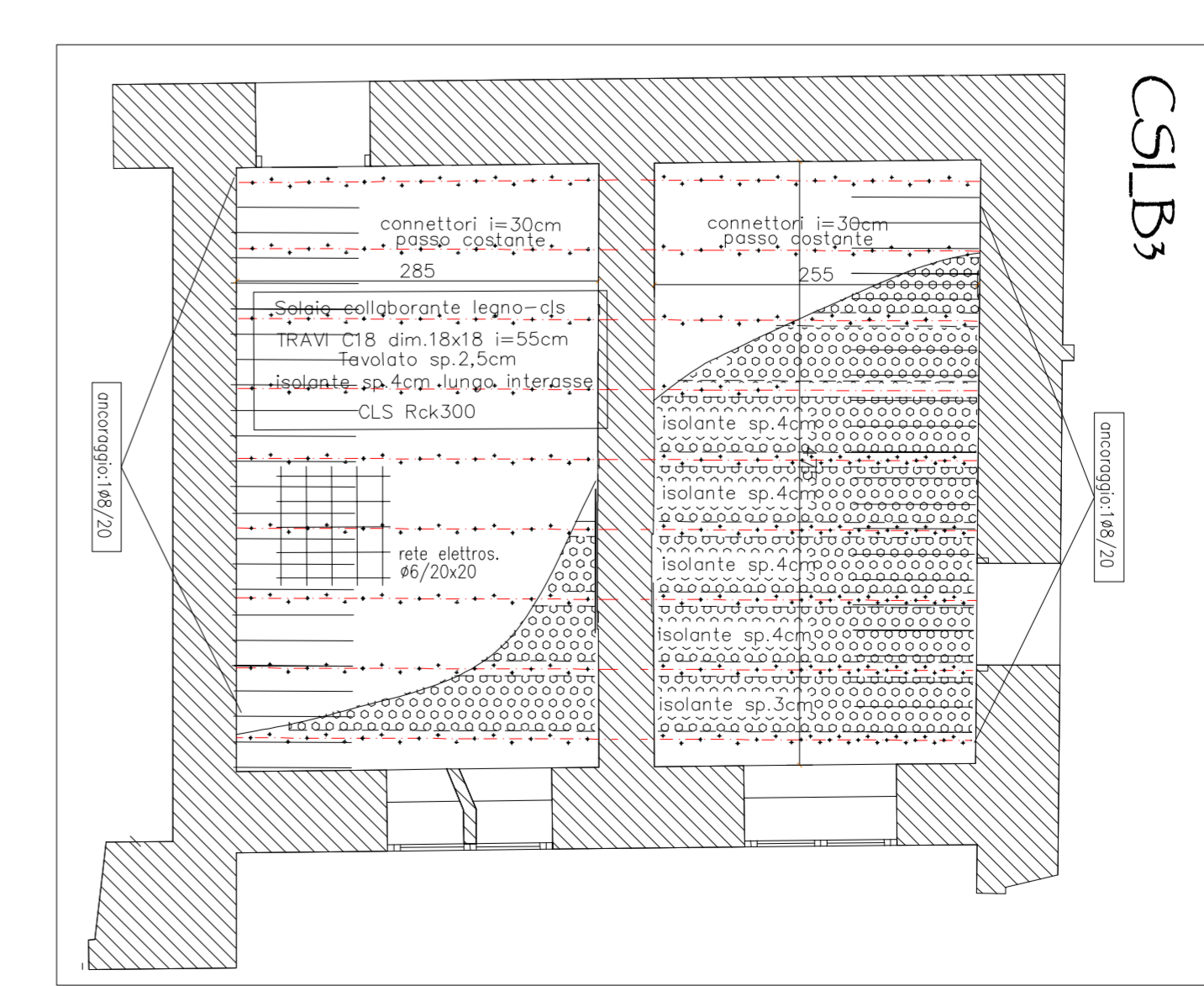
blocco servizi igienici A1-B1_PIANOPRIMO



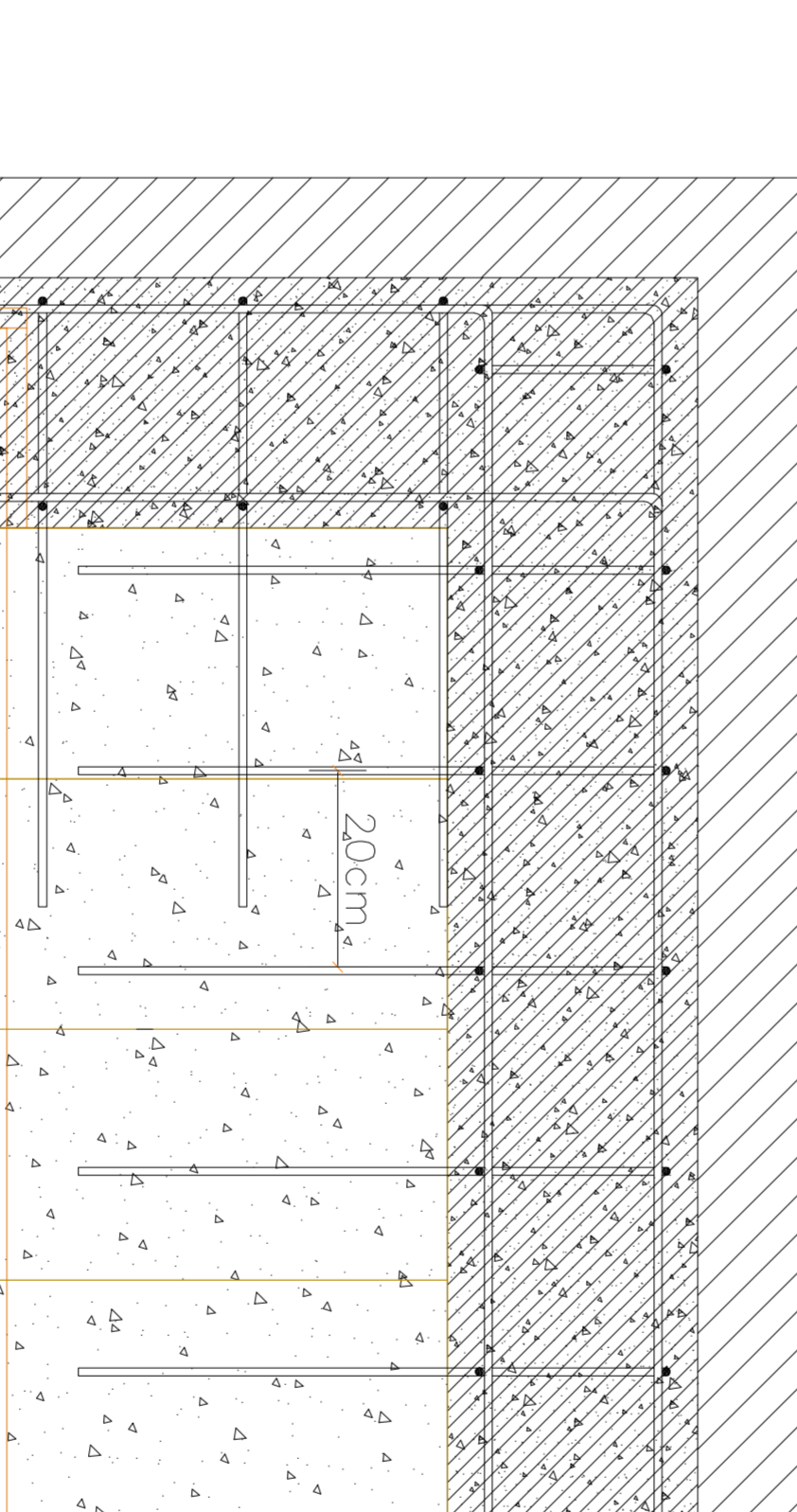
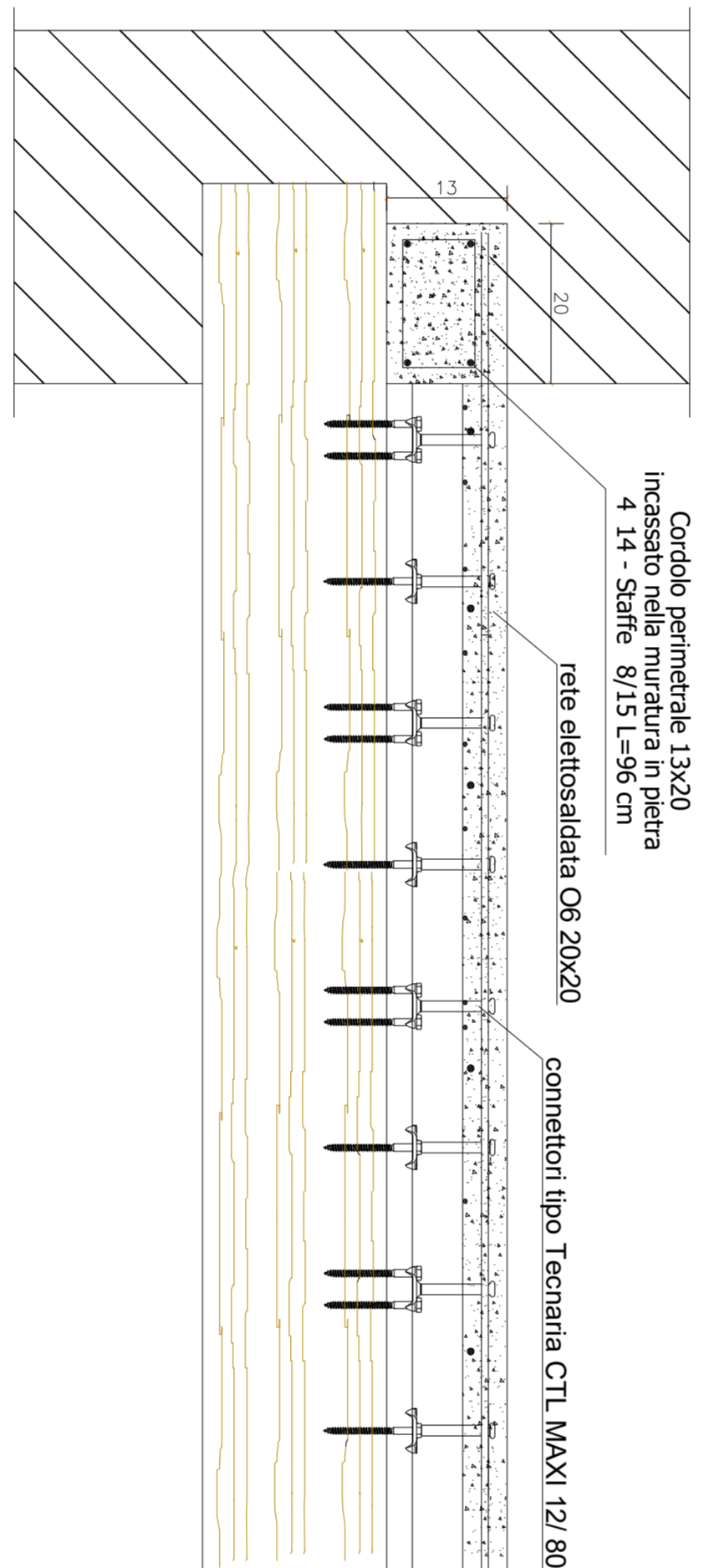
blocco servizi igienici B2_SECONDOPIANO



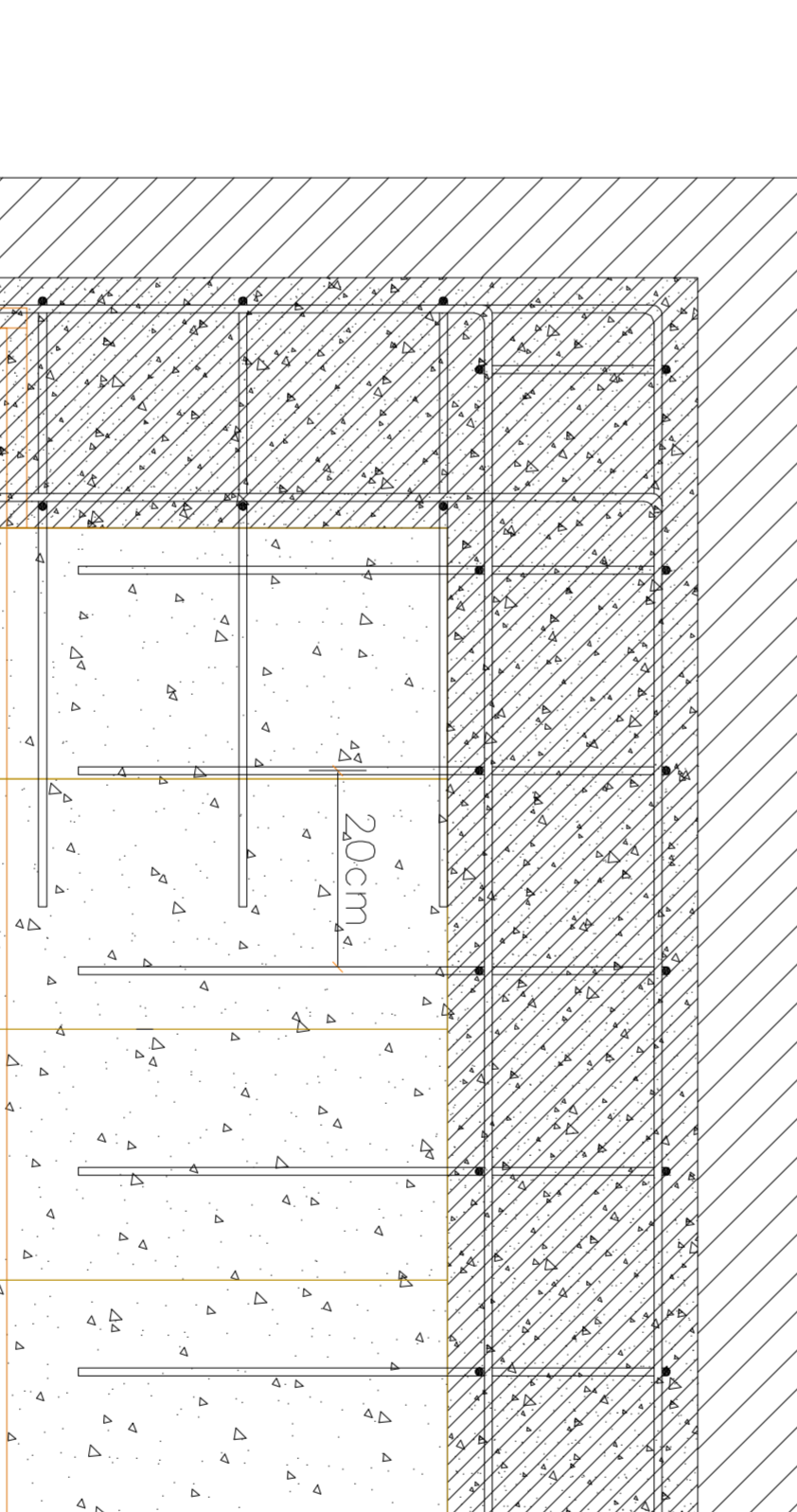
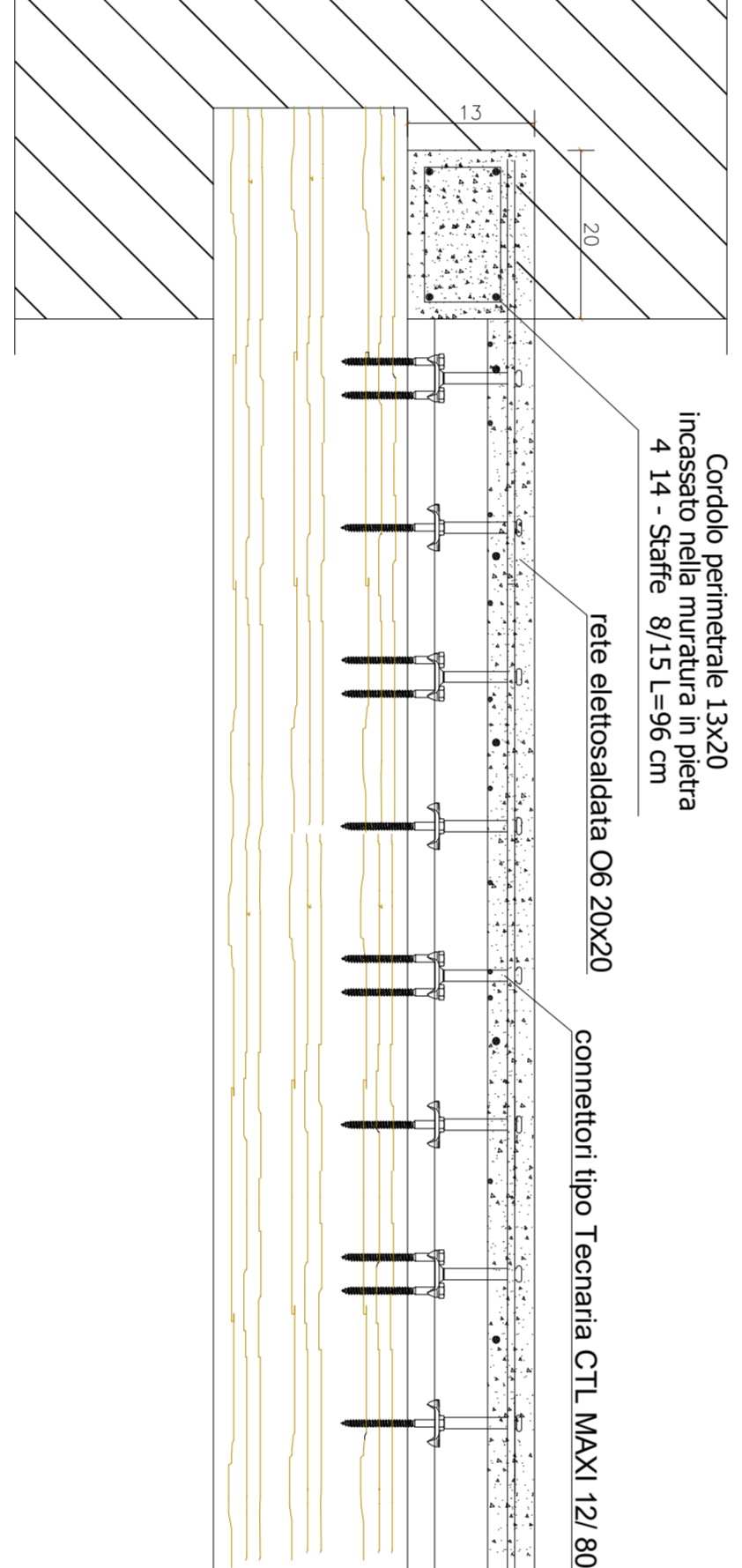
blocco servizi igienici B3_TERZOPIANO



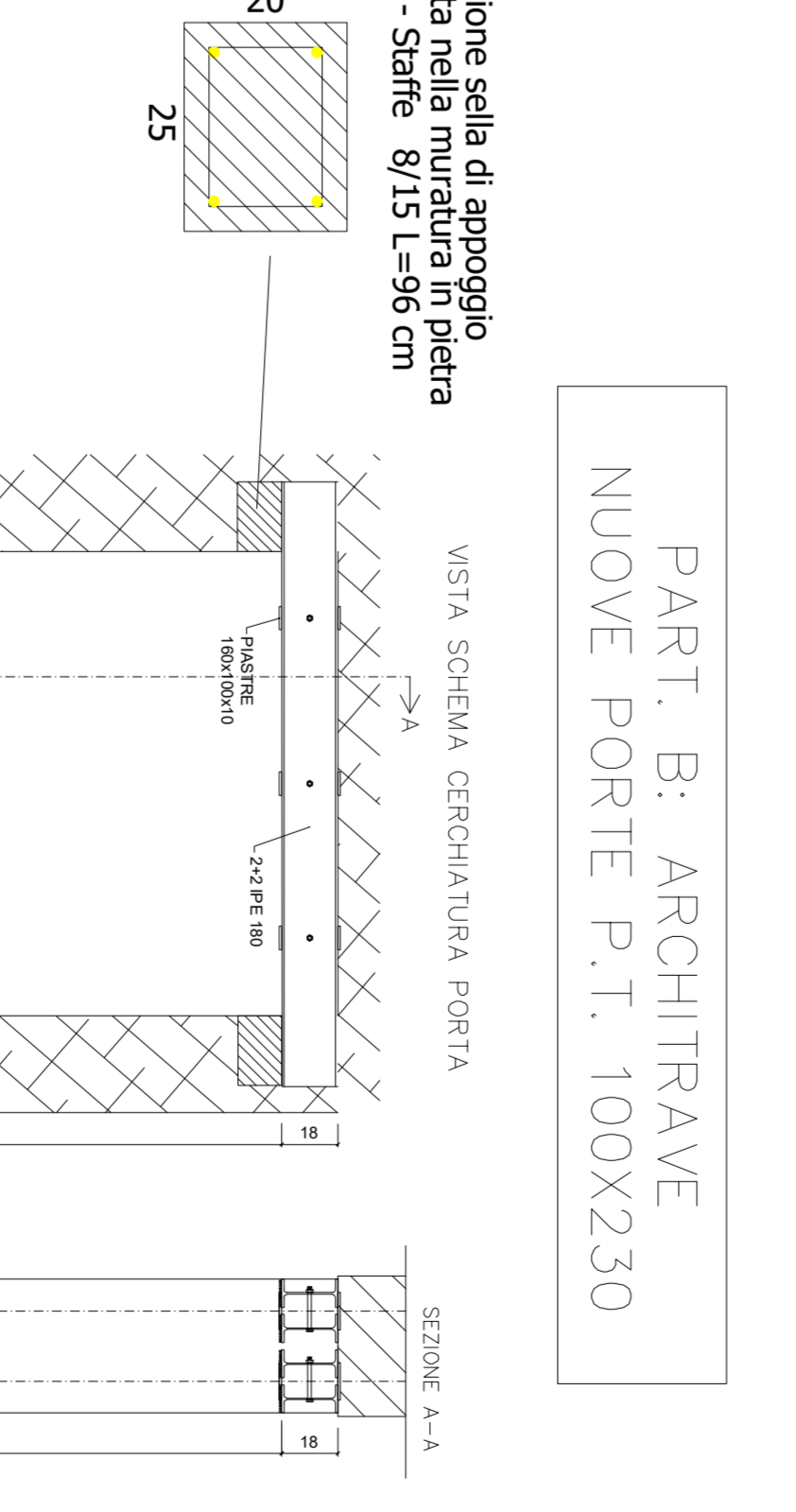
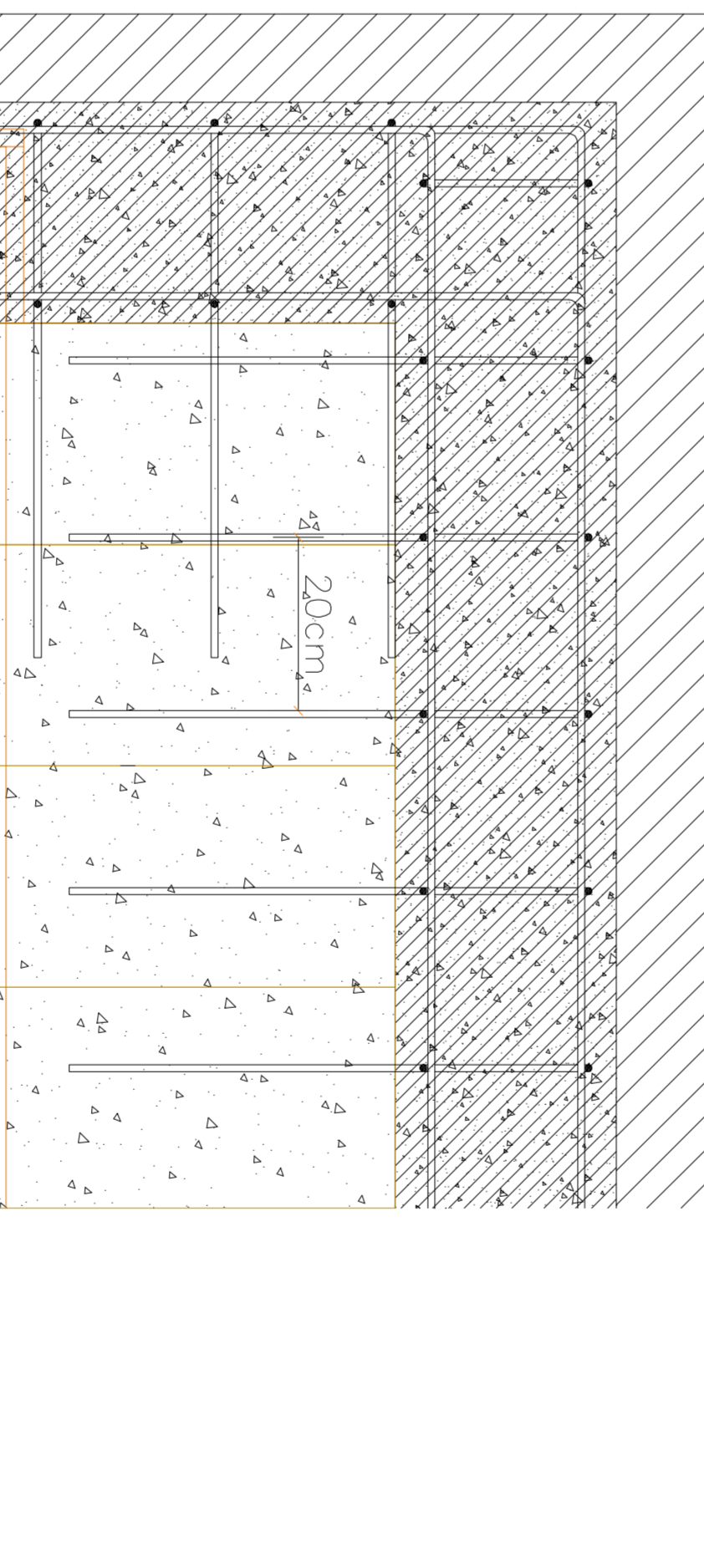
PARTICOLARE 'A' DEI COLLEGAMENTI AL CORDOLO PERIMETRALE SEZIONE SOLAIO COLLABORANTE



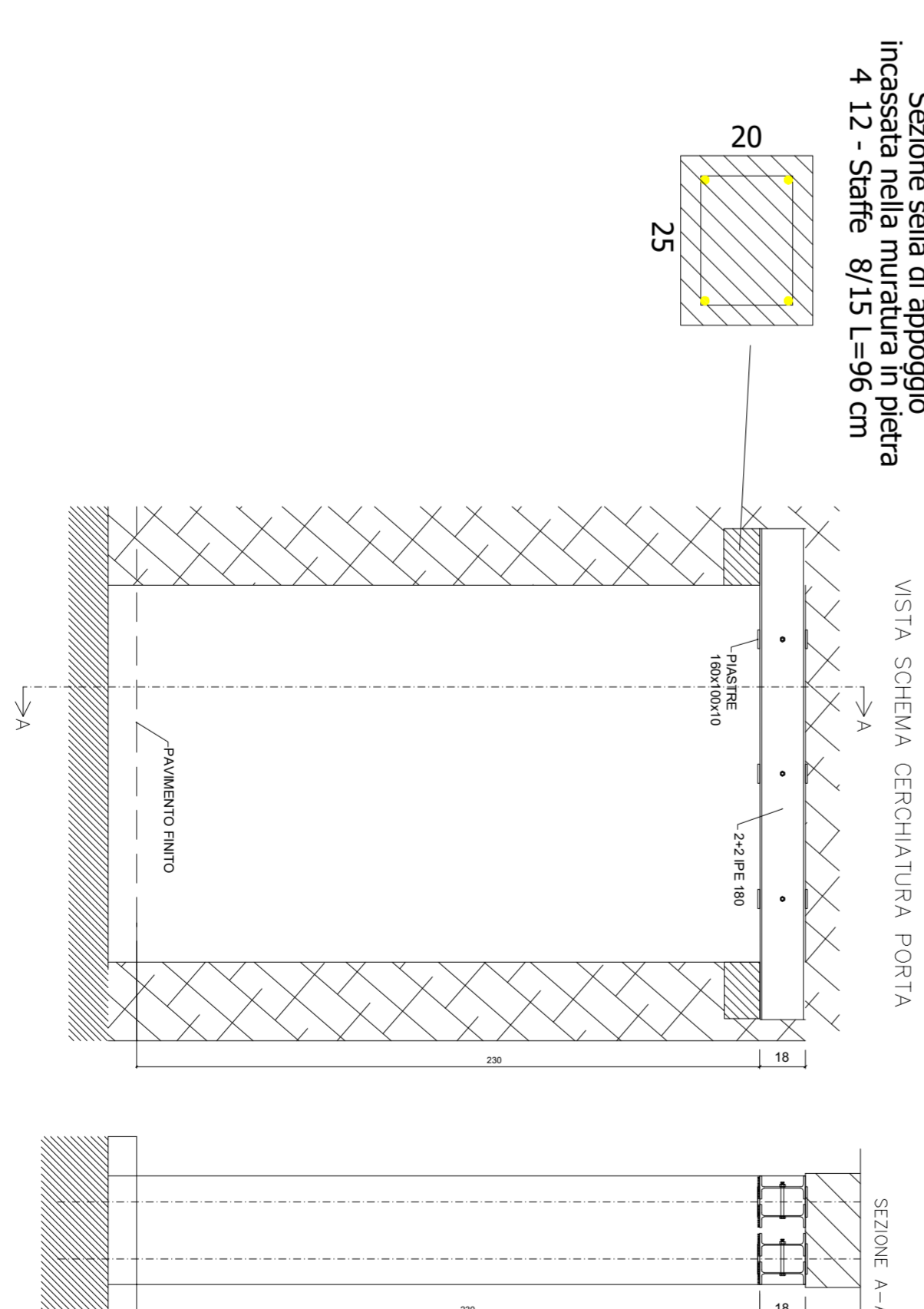
PARTICOLARE 'A' DEI COLLEGAMENTI AL CORDOLO PERIMETRALE SEZIONE SOLAIO COLLABORANTE



PARTICOLARE 'A' DEI COLLEGAMENTI AL CORDOLO PERIMETRALE SEZIONE SOLAIO COLLABORANTE

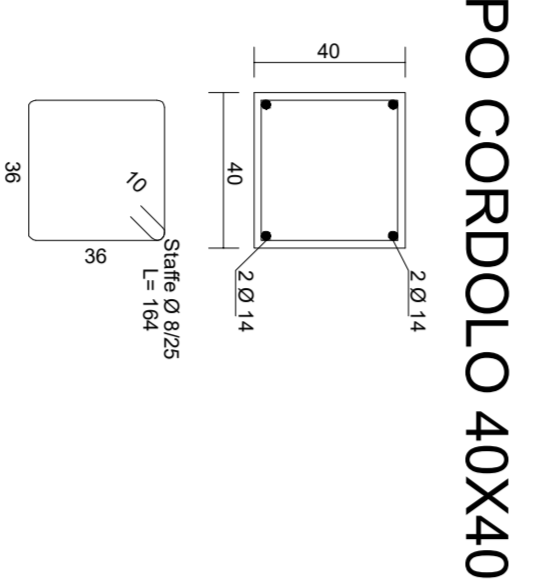


PART. B: ARCHITRAVE NUOVE PORTE P.T. 100X230

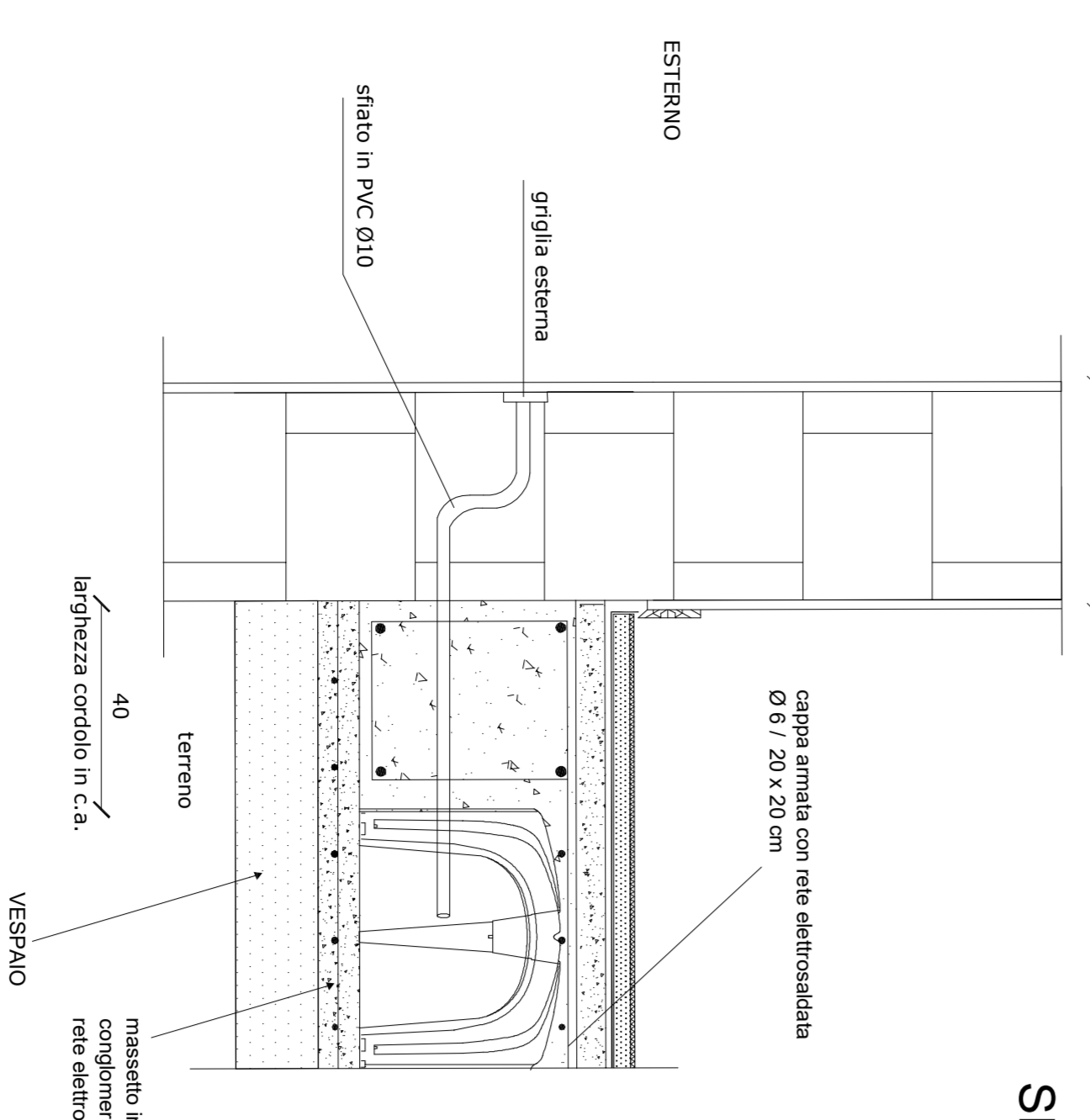


PARTICOLARE IRPIDIMENTO FONDAZIONALE CON INTERCARPINE ORIZZONTALE (ZONA MURATURA PERIMETRALE)

Scala 1:20

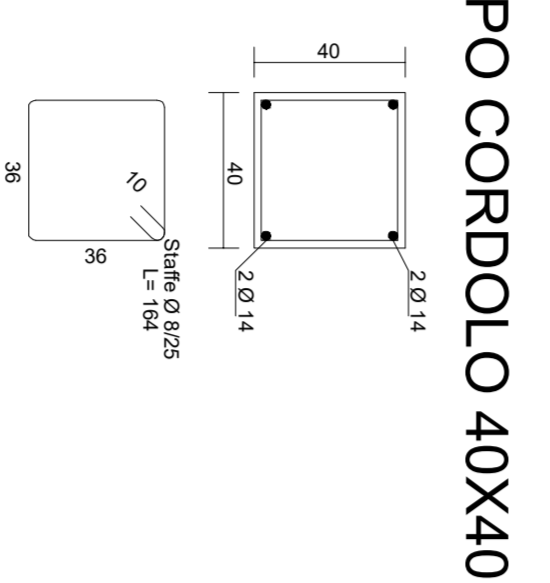


SEZ. TIPO CORDOLO 40X40

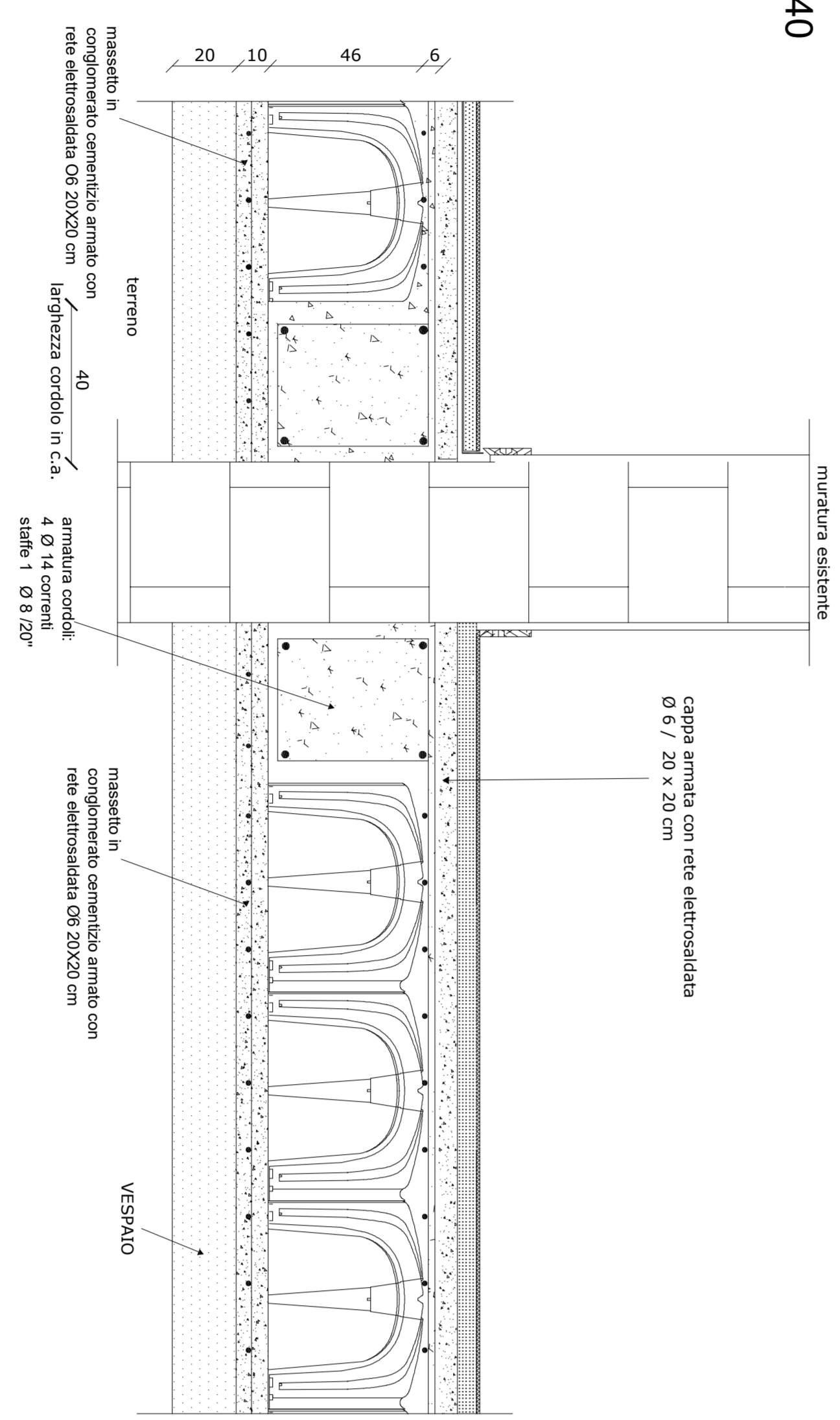


PARTICOLARE IRPIDIMENTO FONDAZIONALE CON INTERCARPINE ORIZZONTALE (ZONA MURATURA INTERNA)

Scala 1:20



SEZ. TIPO CORDOLO 40X40



COMPONENTI C.T.L. MAXI 12/80 - Assilo continuo - Isolante inteposato

INTERFASSE: 7,5cm ai quarti estremi; 15cm in mezzetta

A: trave in legno C18 18x18

B: scallata in calcestruzzo sp.5cm

C: connettore TECNARIA, posato sul lavatoio

E: rete elettrosaldata Ø6/20x20

F: tassello Ø2,5cm

G: tassello Ø2,5cm

H: isolante o altro materiale leggero di riempimento - sp.4cm

PRESCRIZIONI:

CALCESTRUZZO FONDAZIONI: CLASSE Rck300

CALCESTRUZZO ELEVAZIONI: CLASSE Rck300

ACCIAIO DA C.A.: FeB450C

ACCIAIO CARPENTERIA: S275 (Fe430)

LEGNO BILAMA: C24

LEGNO LAMELLARE: GL24h